

Blanking Dimensions

voestalpine Tubulars proprietary connection Rev.4
VAroughneck®

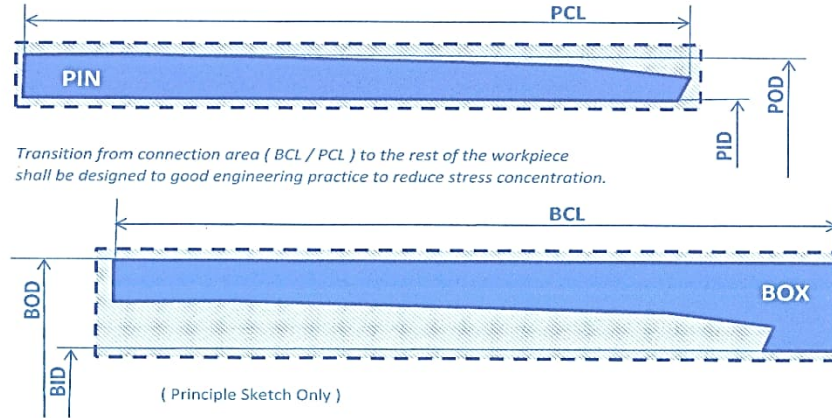
VArroughneck[®]

Blanking Dimensions: Dimensions of voestalpine Tubulars proprietary connections to be considered for the design of accessories

Rev.4: Alignment of the coupling outside diameter of VArroughneck to API Buttress Thread Casing Couplings outside diameter as per Table C.33 of API SPEC 5CT (10th Edition).

This Revision will replace the Blanking Dimension document Rev.3. Changes in the table are marked ^o: Correction of BOD

VArroughneck®



BOD* BOX OUTSIDE DIAMETER
BID* BOX INSIDE DIAMETER
BCL BOX CONNECTION LENGTH

POD* PIN OUTSIDE DIAMETER
PID* PIN INSIDE DIAMETER
PCL PIN CONNECTION LENGTH

* Minimum and maximum dimensions after final machining of the connection.
Reasonable machining allowances shall be agreed with the licensed threader of the connection by considering type of blank (already pre-machined or raw) and/or shape of the whole workpiece.

VArroughneck®

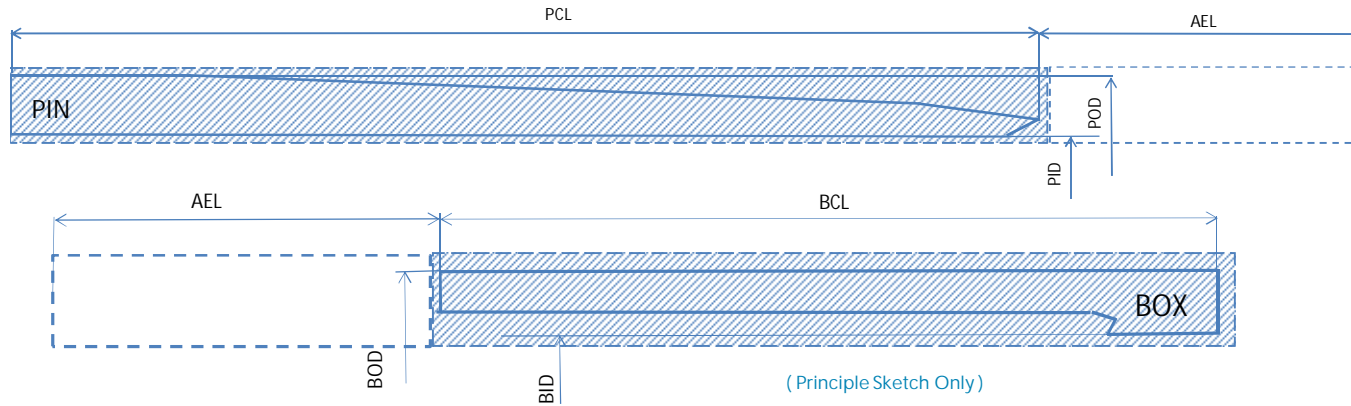
| PIPE DESIGNATION | | PIN | | | BOX | | |
|------------------|-------|-------------|-------------|-------------|--------------------------|-------------|-------------|
| O.D | Lb/ft | POD [mm] | PID [mm] | PCL [mm] | BOD ^o [mm] | BID [mm] | BCL [mm] |
| | | MIN. | MAX. | MIN. | MIN. | MAX. | MIN. |
| 4 ½" | 10,5 | 114,3 | 102,45 | 136 | 133,35 ^o | 102,45 | 116 |
| | 11,6 | | 101,25 | | 133,35 ^o | 101,25 | |
| | 12,6 | | 100,50 | | 133,35 ^o | 100,75 | |
| | 13,5 | | 99,50 | | 133,35 ^o | 99,75 | |
| | 14,1 | | 98,80 | | 133,35 ^o | 99,05 | |
| | 15,1 | | 97,20 | | 133,35 ^o | 97,45 | |
| | 17,0 | | 95,00 | | 133,35 ^o | 95,25 | |
| | 18,9 | | 92,40 | | 133,35 ^o | 92,65 | |
| 5" | 15,0 | 127 | 111,75 | 139,5 | 147,32 ^o | 111,75 | 119,5 |
| | 18,0 | | 108,60 | | 147,32 ^o | 108,85 | |
| | 21,4 | | 104,80 | | 147,32 ^o | 105,05 | |
| | 23,2 | | 102,70 | | 147,32 ^o | 102,95 | |
| | 24,1 | | 101,60 | | 147,32 ^o | 101,85 | |
| | 26,7 | | 98,40 | | 147,32 ^o | 98,65 | |
| 5 ½" | 17,0 | 139,7 | 124,00 | 141 | 160,02 ^o | 124,00 | 121 |
| | 20,0 | | 121,25 | | 160,02 ^o | 121,25 | |
| | 23,0 | | 118,60 | | 160,02 ^o | 118,85 | |
| | 26,0 | | 115,50 | | 160,02 ^o | 115,75 | |
| | 18,8 | | 136,75 | | 170,00 | 136,75 | |
| 6" | 20,0 | 152,4 | 135,85 | 144,25 | 170,00 | 135,85 | 124,25 |
| | 23,0 | | 133,05 | | 170,00 | 133,05 | |
| | 24,5 | | 132,10 | | 170,00 | 132,35 | |
| | 25,1 | | 131,30 | | 170,00 | 131,55 | |

VArroughneck®

| PIPE DESIGNATION | | PIN | | | BOX | | |
|------------------|-------|-------------|-------------|-------------|-------------|-------------|-------------|
| O.D | Lb/ft | POD [mm] | PID [mm] | PCL [mm] | BOD [mm] | BID [mm] | BCL [mm] |
| | | MIN. | MAX. | MIN. | MIN. | MAX. | MIN. |
| 6 5/8" | 20 | 168,3 | 153,45 | 145,75 | 187,71* | 153,45 | 125,75 |
| | 24 | | 150,25 | | 187,71* | 150,25 | |
| | 28 | | 147,10 | | 187,71* | 147,35 | |
| | 32 | | 144,10 | | 187,71* | 144,45 | |
| 7" | 23 | 177,8 | 161,55 | 150,5 | 200,03* | 161,55 | 130,5 |
| | 26 | | 159,40 | | 200,03* | 159,65 | |
| | 29 | | 157,10 | | 200,03* | 157,35 | |
| | 32 | | 154,80 | | 200,03* | 155,05 | |
| | 35 | | 152,50 | | 200,03* | 152,75 | |
| 7 5/8" | 26,4 | 193,7 | 177,00 | 155,3 | 215,90 | 177,05 | 135,3 |
| | 29,7 | | 174,60 | | 215,90 | 174,85 | |
| | 33,7 | | 171,80 | | 215,90 | 172,05 | |
| | 39,7 | | 168,30 | | 215,90 | 158,55 | |
| | 42,8 | | 165,10 | | 215,90 | 165,35 | |
| | 45,3 | | 163,40 | | 215,90 | 163,65 | |

Recut lengths

Recut lengths



| AEL (Min) | |
|------------|-------|
| ≥ 4 ½" PIN | 58 mm |
| ≥ 4 ½" BOX | 58 mm |

BOD* BOX OUTSIDE DIAMETER
 BID* BOX INSIDE DIAMETER
 BCL BOX CONNECTION LENGTH
 AEL Additional excess length for one recut

POD* PIN OUTSIDE DIAMETER
 PID* PIN INSIDE DIAMETER
 PCL PIN CONNECTION LENGTH

* Minimum and maximum dimensions after final machining of the connection.

Reasonable machining allowances shall be agreed with the licensed threader of the connection by considering type of blank (already pre-machined or raw) and/or shape of the whole workpiece.