



DIE CASTING

voestalpine CONVENTIONAL WATER JACKETS designed for pure performance

Over the years, our tailored water jackets have proven their outstanding performance worldwide in the automotive industry.

YOUR ADDED VALUE

Our water jackets are exchangeable tool inserts used for the casting of aluminum engine blocks. This important component is very thin and tends to have variants in thickness of the curved walls from top to bottom. Due to this, a premium solution is required, which we offer in a combination of outstanding **premium materials by BÖHLER/Uddeholm** and including state of the art voestalpine heat treatment and eifeler PVD coating.

Our ready to use water jackets offer high temperature wear resistance, excellent ductility, good temper back resistance and soldering reduction (PVD coating). Less down-time, maintenance efforts and improved OEE directly results in increased productivity for our customer.

Main Properties

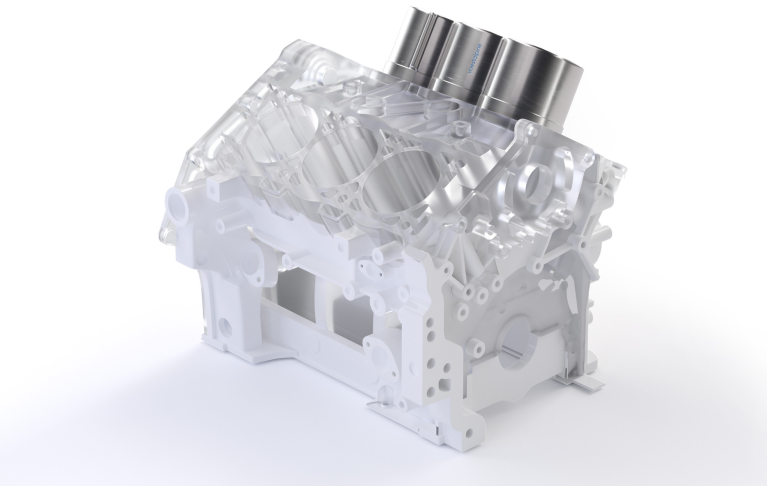
Outstanding hot wear resistance

Premium temper back resistance

High ductility (safety against cracks)

High soldering resistance

High thermal conductivity



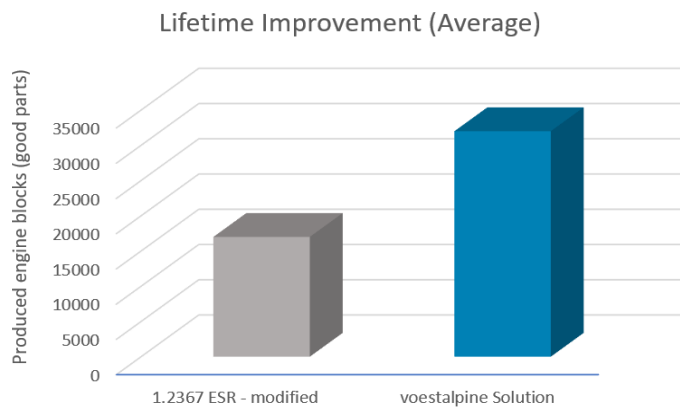
OUR MATERIALS

C	Si	Mn	Cr	Mo	V
0.38	0.20	0.55	5.00	1.80	0.55

C	Si	Mn	Cr	Mo	V
0.35	0.20	0.50	5.00	2.30	0.60

INDUSTRIAL PERFORMANCE COMPARISON

- » Scrap rate reduction
- » Reduced maintenance effort
- » Stable, high quality final casted parts



voestalpine High Performance Metals GmbH

Donau-City-Straße 7
1220 Vienna, Austria

T. +43/50304 10 - 0

office.edelstahl@voestalpine.com

www.voestalpine.com

September_2022_EN

voestalpine

ONE STEP AHEAD.