



DIE CASTING

## voestalpine SUB INSERTS designed for pure performance

Over the years, our tailored sub inserts have proven their performance quality in all major industry segments like automotive, white goods and many more.

### YOUR ADDED VALUE

Our sub inserts for die casting applications are created from combined **premium materials by BÖHLER/ Uddeholm**. The finished products include voestalpine heat treatment, final machining, and eifeler PVD coating services to develop premium high performance solutions that are ready to be used by foundries.

voestalpine sub inserts offer high temper back resistance with excellent ductility, significant soldering reduction, heat checking resistance, reduced down-time and maintenance efforts. Furthermore they provide good thermal conductivity and a hardness of up to 57 HRC, which delivers superior high temperature wear resistance.

#### Main Properties

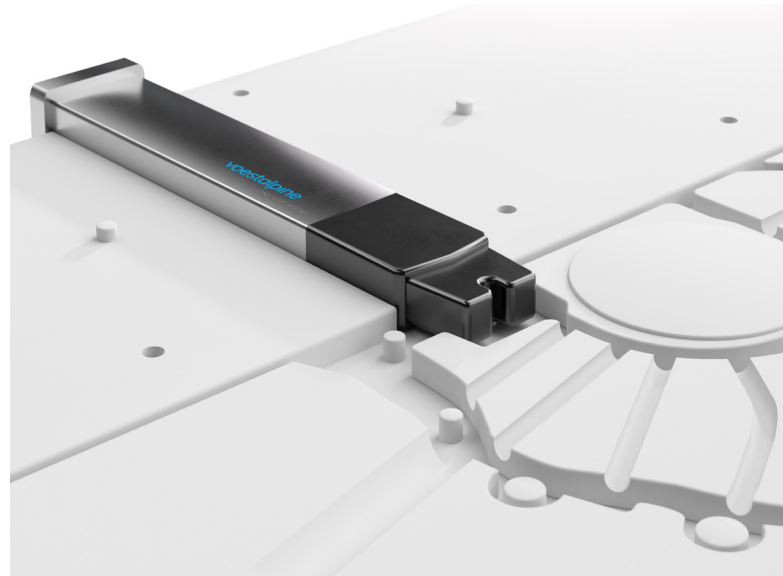
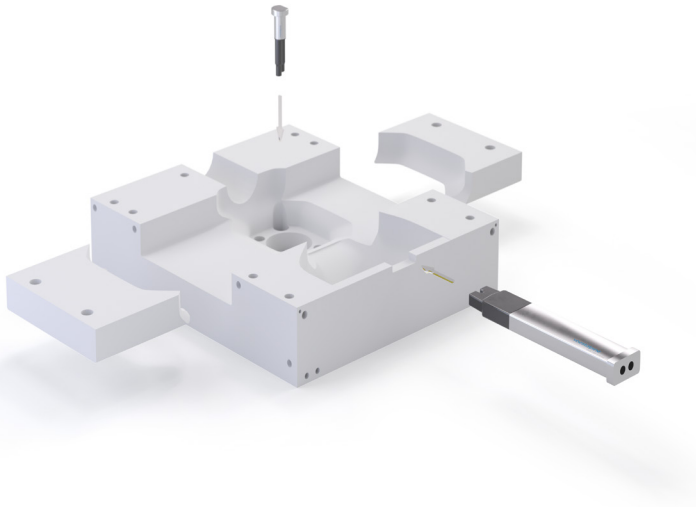
Outstanding hot wear resistance

Premium temper back resistance

High ductility (safety against cracks)

High thermal conductivity

Good machinability



## OUR MATERIALS

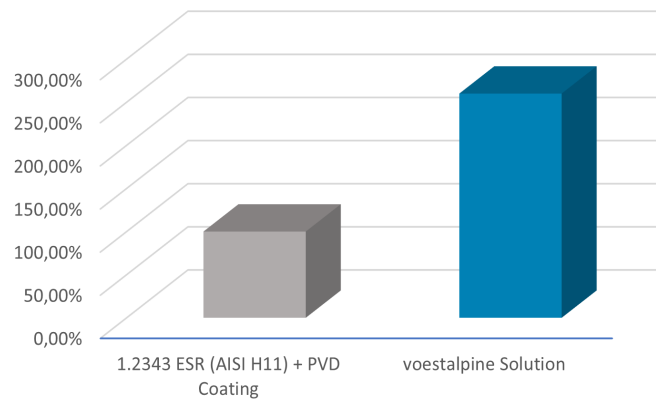
C	Si	Mn	Cr	Mo	V
0.50	0.20	0.25	4.50	3.00	0.60

C	Si	Mn	Cr	Mo	V
0.38	0.30	0.75	2.60	2.25	0.90

## INDUSTRIAL PERFORMANCE COMPARISON

- » Less maintenance/cleaning effort
- » Reduced downtime
- » Reduced scrap rate

### Lifetime Improvement



### voestalpine High Performance Metals GmbH

Donau-City-Straße 7  
1220 Vienna, Austria

T. +43/50304 10 - 0

office.edelstahl@voestalpine.com

www.voestalpine.com

January\_2024\_EN

**voestalpine**

ONE STEP AHEAD.