

# ADDITIVE MANUFACTURING CENTERS - DIGITAL WAREHOUSING

Re-create legacy designs | Re-deploy anywhere in the world | ONE STEP AHEAD.

## REVERSE ENGINEERING

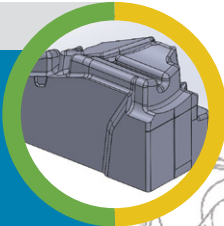
### Physical Component

- » Advanced Metrology
- » CMM measurements



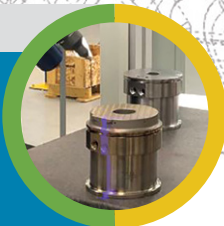
### Re-create CAD

- » Advanced modelling
- » Detailed design & tolerancing



### Validate via 3D Scan

- » Compare digital CAD to physical scan data
- » Ready for re-deployment anywhere in the world!



## ADDITIVE MANUFACTURING

### Multiple Regions

- » North America
- » Europe
- » Asia-Pacific



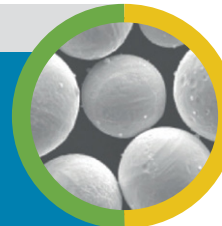
### Multiple Technologies

- » Laser Powder Bed Fusion (LPBF)
- » Direct Energy Deposition (DED)
- » Wire Arc AM (WAAM)



### Multiple Materials

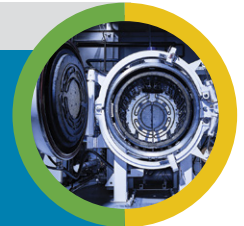
- » Steels
- » Nickel-based superalloys
- » Cobalt-based superalloys
- » Titanium alloys



## POST-PROCESSING

### Thermal Processing

- » Hot Isostatic Pressing (HIP)
- » Heat treatment



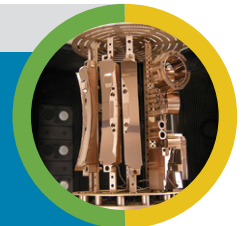
### Machining & Balancing

- » 5-axis precision machining
- » Balancing for rotating parts
- » Network of approved vendors



### Surface Treatment

- » PVD coatings
- » High velocity coatings
- » Tumbling
- » Sand blasting
- » Electro-polishing



voestalpine Additive Manufacturing Centers

North America  
amc-nam@voestalpine.com

Singapore  
sales\_SG@voestalpine.com

voestalpine  
ONE STEP AHEAD.