

Engineered Products



DIE CASTING

voestalpine SPRUES - AM designed for pure performance

Our tailored sprues have proven their outstanding performance quality in all major industry segments like automotive, white goods and many more.

YOUR ADDED VALUE

Our additively manufactured sprues for high pressure die casting applications are produced from **premium materials by BÖHLER/Uddeholm**. The finished products include voestalpine heat treatment and tailored conformal cooling.

The ready to use AM sprues are mainly used in three-plate die casting molds. This solution offers high temperature wear resistance, excellent ductility, good temper back resistance and significant soldering reduction. Reduced down-time and maintenance efforts, increases the OEE for our customer, which directly results in increased productivity.

Main Properties

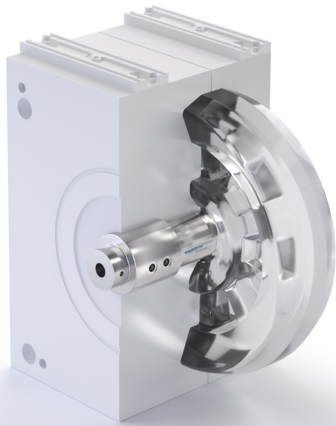
Outstanding hot wear resistance

Premium temper back resistance

High ductility (safety against cracks)

High soldering resistance

High thermal conductivity



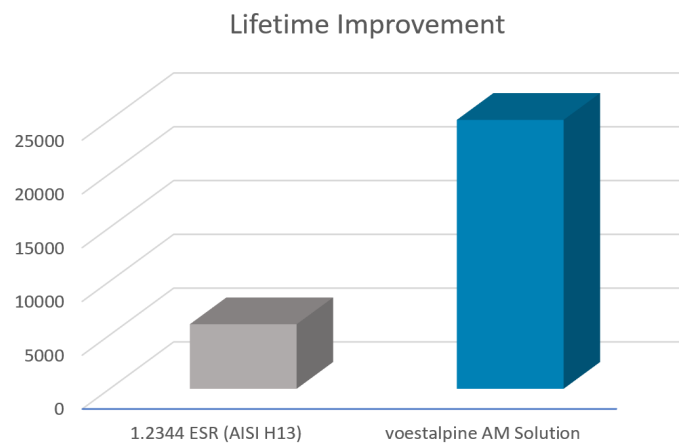
OUR MATERIALS

C	Si	Mn	Cr	Mo	V
0.50	0.20	0.25	4.50	3.00	0.60

C	Si	Mn	Ni	Mo	Co	Ti
≤0.03	≤0.10	≤0.15	18.00	4.90	9.30	1.10

INDUSTRIAL PERFORMANCE COMPARISON

- » Cycle time reduction
- » Reduced maintenance effort
- » Stable, high quality final casted parts



voestalpine High Performance Metals GmbH

Donau-City-Straße 7
1220 Vienna, Austria

T. +43/50304 10 - 0

office.edelstahl@voestalpine.com

www.voestalpine.com

September_2022_EN

voestalpine

ONE STEP AHEAD.