

RAILWAY SYSTEMS

We set the course for success!

Reliability in every detail - for your railway systems

Bahnsysteme factsheet EN | 08/2024

When it comes to railway systems, we set new standards in terms of robustness and reliability.

With our cast steel portfolio, we not only supply components for railway vehicles and turnout systems, but also pure strength that can withstand the toughest requirements with ease. Discover how our innovative solutions are shaping the future of rail transport and ensuring safety and efficiency on every route.

ADVANTAGES



Efficiency Increase

- » Complete service - from the casting process to finishing
- » Use of the latest technologies



Quality Improvement

- » Specially optimised materials
- » Highly precise and reliably reproducible castings

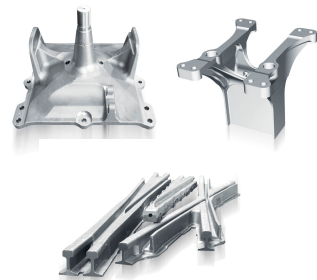


Sustainability

- » Protect the environment through centralised production and minimisation of transport routes

OUR PORTFOLIO:

- » Gearbox Housing
- » Bolster / Coupler
- » Brake Baskets
- » Frames
- » Hanger of Bogie
- » Turnout Systems
- » and many other items



voestalpine Foundry Group

As an international player in the foundry industry, voestalpine Foundry Group, with its sites in Linz (AUT), Traisen (AUT) and the joint venture in China, has made a name for itself worldwide.

With a broad portfolio of steel castings, including nickel-based alloys, it offers customized solutions in areas ranging from railway systems to machinery and energy. By using state-of-the-art technologies and increasingly focusing on climate-friendly production processes, voestalpine Foundry Group is the first choice for cast products of the highest quality.

Please find further information at:

